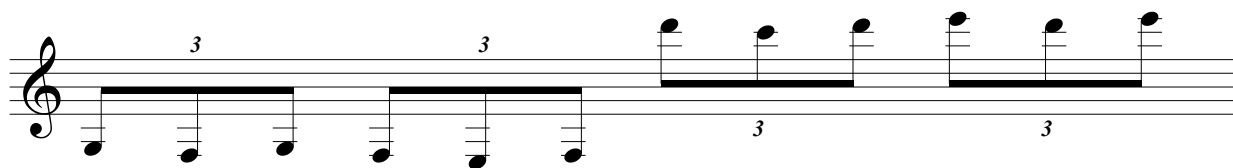


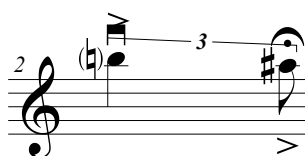
Tuplet Optimizations with Perfect Layout

Original Look:

Tuplet placement with brackets on extreme high/low Notes for improved readability



Correct order of articulations and triplets



Unnecessary brackets on beamed notes disappear



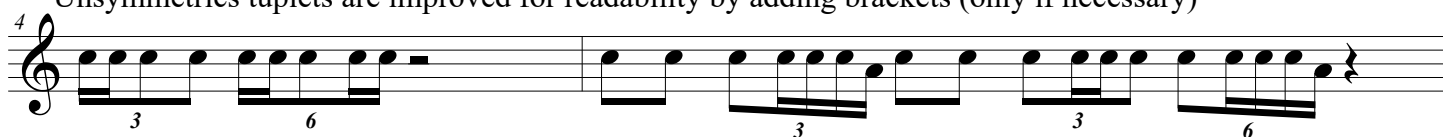
Necessary brackets are added



Necessary brackets are added or made clear through secondary beam breaks



Unsymmetrical triplets are improved for readability by adding brackets (only if necessary)



Nested triplets are made clear



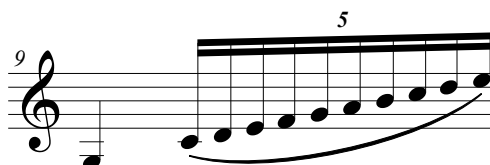
Triplets in rhythmic notation and on lyrics are put on top



Improved settings for brackets on extreme triplets



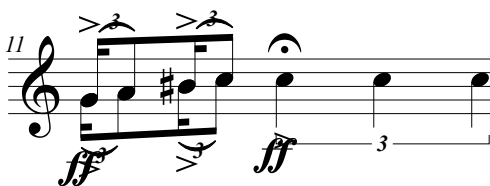
Tuplet numbers are corrected for better readability



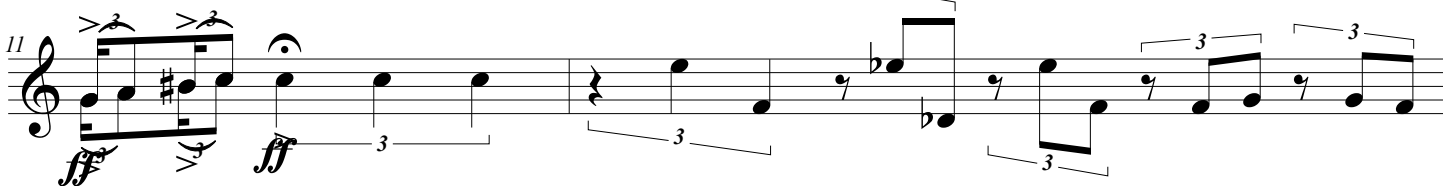
Triplets can be removed or modified if easier readable



Collision removal



Several methods for flattening triplet brackets on rests



Tuplet Optimizations with Perfect Layout

After Applying Perfect Layout:

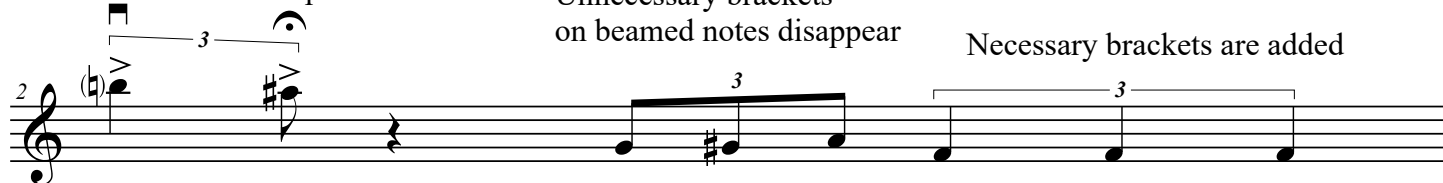
Tuplet placement with brackets on extreme high/low Notes for improved readability



Correct order of articulations and tuplets

Unnecessary brackets on beamed notes disappear

Necessary brackets are added



Necessary brackets are added or made clear through secondary beam breaks



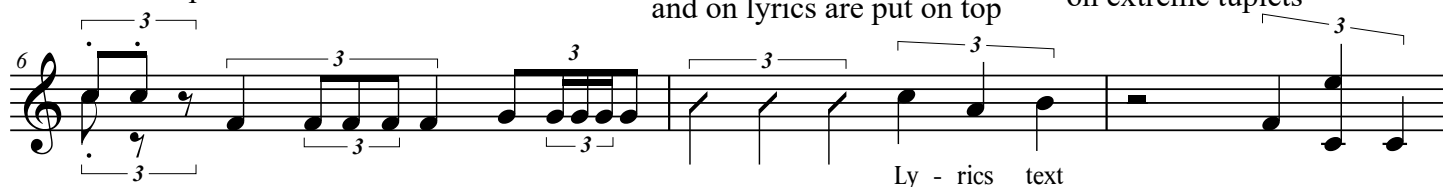
Unsymmetrical tuplets are improved for readability by adding brackets (only if necessary)



Nested tuplets are made clear

Tuplets in rhythmic notation and on lyrics are put on top

Improved settings for brackets on extreme tuplets



Tuplet numbers are corrected for better readability

Tuplets can be removed or modified if easier readable



Collision removal

Several methods for flattening tuplet brackets on rests

